



## Golden Turbine® GT

High speed and eccentric working torques for strong vibration. Wide range.

### Properties

- Lubrication-free
- Low noise level
- Strong vibration by means of high speed and eccentric working torques
- Rated frequency 6'000 – 46'000 rpm
- Centrifugal force 130 – 12'000 N
- Continuously variable
- Can be used up to 150 °C
- Resistant to extreme environmental conditions

### Field of application

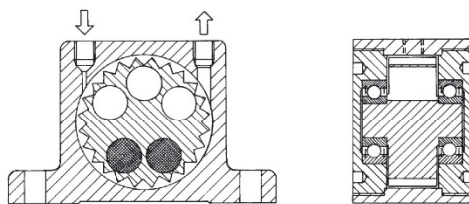
- Emptying of bunkers
- Screen filters
- Vibrating tables
- Preventing adhesions in pipelines and silos
- Transporting of fine powders
- Moving of bulk materials

### Construction

- Vibration from the centrifugal force of positive and negative imbalanced torques in the rotor.
- Rotor on two pre-lubricated and enclosed ball bearings arranged in pairs. Lubricated with special grease for long life.

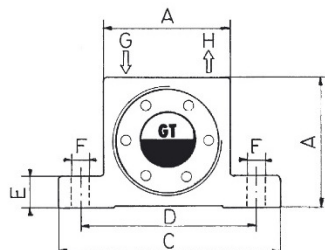
Technical data (in detail and with PSI, LBS, CF: [www.findeva.com](http://www.findeva.com))

Model	Vibrations 1000 rpm		Centrifugal force N		Air consumption l/min	
	2 bars	6 bars	2 bars	6 bars	2 bars	6 bars
GT-4	14	15	135	200	33	83
GT-6	11,5	12,5	130	210	33	83
GT-8	36	46	990	2910		
GT-10	27,5	37,5	840	2400	46	112
GT-10-S	17	25	650	1950		
GT-13	26	33	1400	3730		
GT-16	17	24	1220	3160	120	290
GT16-S	11,5	17	1100	2700		
GT-20	17	23	2170	5520		
GT-25	12	17	2120	5070	185	455
GT-25-S	8,5	13	2250	4900		
GT-30	13	16	3380	7540		
GT-36	8	13	3290	7190	330	745
GT-36-S	6,1	8,3	4100	7500		
GT-40	7,7	9,5	4300	9800		
GT-48	6	9,7	4900	10500	425	970
GT-48-S	-	6,3	-	12000		



Housing made from extruded aluminium alloy  
Turbine wheel made from surface-hardened aluminium  
Surface-hardened aluminium end plates

Sizes and weights in mm and g (more details and including inches at [www.findeva.com](http://www.findeva.com))



Model	A	Width	C	D	E	F	G/H	Weight
GT-4 / 6	40	28	70	56	10,5	6	1/8"	170
GT-8 / 10	50	33	86	68	12	7	1/8"	255
GT-13 / 16	65	42	113	90	16	9	1/4"	580
GT-20 / 25	80	56	128	104	16	9	1/4"	1120
GT-30 / 36	100	73	160	130	20	11	3/8"	2300
GT-40 / 48	120	83	194	152	24	17	3/8"	3890