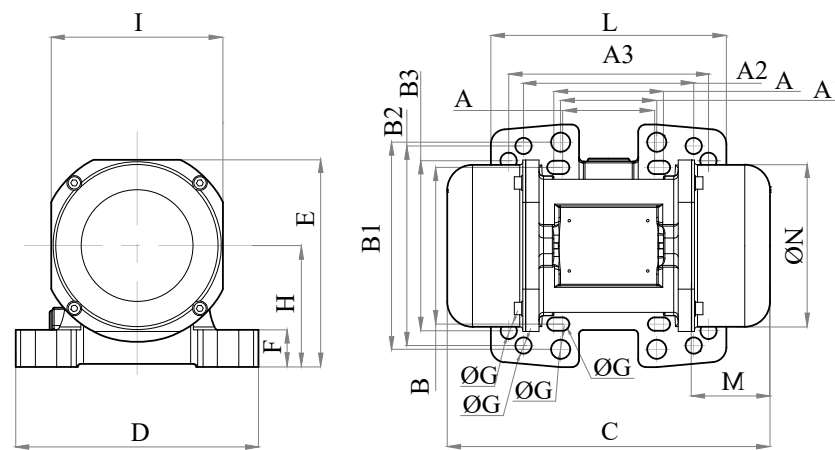


DC - 2 poles - 3000 RPM - 12 V - DC


Working moment [Kg*cm]	Unbalance [Kg*cm]	Centrifugal force [Kg]	Nominal voltage [V]	Input power [kW]	Current [A]	Power factor	Ia/In
1,1	0,55	117	12	0,12	9,5		5






*Technical drawings are illustrative purposes only, please refer to 2D/3D drawings available on "FINDER" app. Contact us for more information.

OVERALL DIMENSIONS [mm]																					
Weight [Kg]	A	A1	A2	A3	B	B1	B2	B3	G	G1	G2	Holes number	C	D	E	F	H	I	L	M	N
6,5	62-74	65	115	135	106	140	135	115	9	13	11	4	218	164	140	25	82	116	159	53	110

TECHNICAL FEATURES						
Type of grease	Greased for life	Screw	Washer	Clamping torque [Nm]	Cable type	Cable gland
/	Yes	M8-M10-M12	8,4 x 16 - 10,5 x 20 - 13 x 24 mm	23-45-80	2G1.5 90°	M16 80°C

BEARINGS LIFE HOURS				
Bearing model	Type	100% C.F	80% C.F	50% C.F
6301-6302 2Z		7705	15050	61643

CERTIFICATION	
Atex II 3D Ex tc IIIc T140°C IP66	  

REV.3-18/03/2022

Dimension with coarse degree of accuracy related to UNI 22768/1 Rights reserved to modify technical specifications.