

## 6 poles - 1.000/1.200 rpm

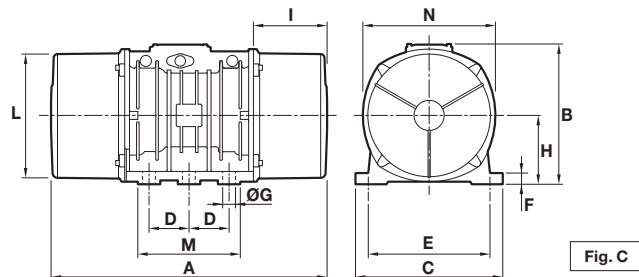
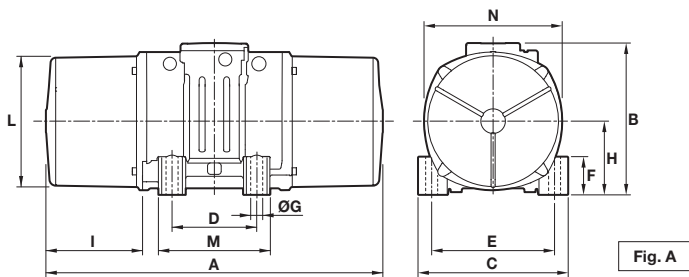
### Three-phase

| DESCRIPTION |                     |      |                            | MECHANICAL SPECIFICATIONS |       |                                 |       |      |      |              |      | ELECTRICAL SPECIFICATIONS |       |                   |              |       |      |
|-------------|---------------------|------|----------------------------|---------------------------|-------|---------------------------------|-------|------|------|--------------|------|---------------------------|-------|-------------------|--------------|-------|------|
| Code        | Type                | SIZE | <br>I12D<br>Temp.<br>class | Static moment*<br>kgmm    |       | Centrifugal force<br>kg      kN |       |      |      | Weight<br>kg |      | Max input power<br>W      |       | Max. current<br>A |              | Ia/In |      |
|             |                     |      |                            | 50Hz                      | 60Hz  | 50Hz                            | 60Hz  | 50Hz | 60Hz | 50Hz         | 60Hz | 50Hz                      | 60Hz  | 400V<br>50Hz      | 460V<br>60Hz | 50Hz  | 60Hz |
| 602296      | MVSI 10/40-S02      | 10   | • 120°C                    | 30,0                      | 30,0  | 33,5                            | 48,3  | 0,33 | 0,47 | 9,0          | 9,0  | 120                       | 135   | 0,30              | 0,30         | 1,90  | 2,07 |
| 602297      | MVSI 10/100-S02     | 10   | • 120°C                    | 84,2                      | 84,2  | 94,3                            | 136   | 0,93 | 1,33 | 11,9         | 11,9 | 120                       | 135   | 0,30              | 0,30         | 1,90  | 2,07 |
| 602298      | MVSI 10/200-S02     | 20   | • 120°C                    | 163                       | 163   | 183                             | 264   | 1,80 | 2,59 | 18,1         | 18,1 | 185                       | 205   | 0,50              | 0,50         | 2,72  | 3,10 |
| 602314      | MVSI 10/310-S02     | 30   | • 120°C                    | 286                       | 209   | 321                             | 338   | 3,15 | 3,32 | 25,7         | 24,0 | 350                       | 380   | 0,72              | 0,68         | 2,63  | 2,79 |
| 602241      | MVSI 10/400-S02     | 30   | • 120°C                    | 357                       | 357   | 400                             | 576   | 3,93 | 5,65 | 29,0         | 29,0 | 350                       | 380   | 0,72              | 0,68         | 2,63  | 2,79 |
| 602402      | MVSI 10/550-S02     | 35   | • 120°C                    | 457                       | 457   | 512                             | 737   | 5,02 | 7,23 | 32,6         | 32,6 | 350                       | 380   | 0,75              | 0,68         | 2,53  | 3,68 |
| 602403      | MVSI 10/650-S02     | 35   | • -                        | 580                       | 457   | 650                             | 737   | 6,37 | 7,23 | 35,5         | 32,6 | 350                       | 380   | 0,95              | 0,88         | 3,16  | 3,86 |
| 602380      | MVSI 10/810-S08     | 40   | • 135°C                    | 723                       | 561   | 809                             | 905   | 7,94 | 8,88 | 44,0         | 40,0 | 680                       | 760   | 1,40              | 1,35         | 2,79  | 3,33 |
| 602381      | MVSI 10/1110-S08    | 50   | • 135°C                    | 1012                      | 715   | 1132                            | 1151  | 11,1 | 11,3 | 55,8         | 48,8 | 750                       | 750   | 1,65              | 1,50         | 3,33  | 4,13 |
| 602382      | MVSI 10/1400-S08    | 50   | • 135°C                    | 1274                      | 921   | 1424                            | 1483  | 14,0 | 14,5 | 63,0         | 55,5 | 950                       | 1000  | 1,80              | 1,70         | 3,05  | 3,65 |
| 602406      | MVSI 10/1610-S08    | 60   | • 135°C                    | 1464                      | 962   | 1638                            | 1549  | 16,1 | 15,2 | 80,0         | 70,0 | 1100                      | 1300  | 2,20              | 2,20         | 4,21  | 4,05 |
| 602407      | MVSI 10/2100-S08    | 60   | • 135°C                    | 1927                      | 1318  | 2154                            | 2102  | 21,1 | 20,6 | 92,0         | 82,0 | 1500                      | 1770  | 3,00              | 2,75         | 3,42  | 4,00 |
| 602167      | MVSI 10/2610-S02    | 70   | • 135°C                    | 2326                      | 1720  | 2601                            | 2747  | 25,5 | 26,9 | 130          | 116  | 1960                      | 2100  | 4,10              | 3,75         | 5,35  | 5,60 |
| 602230      | MVSI 10/3000-S02    | 70   | • 135°C                    | 2690                      | 1940  | 3007                            | 3124  | 29,5 | 30,6 | 145          | 130  | 2200                      | 2400  | 4,50              | 4,30         | 4,35  | 4,81 |
| 602154      | MVSI 10/3810-S02    | 80   | • 135°C                    | 3422                      | 2380  | 3826                            | 3831  | 37,5 | 37,6 | 188          | 170  | 2500                      | 3000  | 5,10              | 5,00         | 5,91  | 6,00 |
| 602204      | MVSI 10/4700-S02    | 80   | • 135°C                    | 4206                      | 2887  | 4701                            | 4648  | 46,1 | 46,0 | 204          | 183  | 3200                      | 3600  | 6,50              | 6,00         | 5,24  | 5,50 |
| 602350      | MVSI 10/5150-S02    | 80   | • 135°C                    | 4678                      | 3230  | 5230                            | 5200  | 51,3 | 51,0 | 225          | 200  | 3200                      | 3600  | 6,50              | 6,00         | 5,24  | 5,50 |
| 602138      | MVSI 10/5200-S02    | 90   | • 135°C                    | 4658                      | 3288  | 5208                            | 5293  | 51,1 | 51,9 | 238          | 215  | 3800                      | 4000  | 7,00              | 6,50         | 4,71  | 5,08 |
| 602351      | MVSI 10/5700-S02    | 90   | • 135°C                    | 5044                      | 3478  | 5650                            | 5600  | 55,4 | 54,9 | 240          | 220  | 3800                      | 4000  | 7,00              | 6,50         | 4,71  | 5,08 |
| 602091      | MVSI 10/6500-S02    | 90   | • 135°C                    | 5838                      | 4055  | 6527                            | 6529  | 64,0 | 64,0 | 268          | 258  | 4300                      | 5000  | 8,20              | 8,10         | 4,51  | 5,83 |
| 602136      | MVSI 10/6600-S02 Δ  | 97   | • 135°C                    | 6083                      | 3979  | 6799                            | 6405  | 66,7 | 62,8 | 308          | 280  | 5000                      | 5900  | 10,0              | 9,80         | 5,61  | 5,82 |
| 602352      | MVSI 10/7000-S02    | 90   | • 135°C                    | 6272                      | 4348  | 7013                            | 7000  | 68,8 | 68,7 | 275          | 263  | 4300                      | 5000  | 8,20              | 8,10         | 4,51  | 5,83 |
| 602092      | MVSI 10/8000-S90    | 95   | □ 135°C                    | 7197                      | 4967  | 8046                            | 7996  | 78,9 | 78,4 | 315          | 277  | 7000                      | 7500  | 12,6              | 11,3         | 4,59  | 5,58 |
| 602093      | MVSI 10/9000-S90    | 95   | □ 135°C                    | 7752                      | 5385  | 8666                            | 8669  | 85,0 | 85,0 | 326          | 289  | 7500                      | 8200  | 14,0              | 12,9         | 4,13  | 4,88 |
| 602137      | MVSI 10/10000-S02   | 97   | □ 135°C                    | 8673                      | 5664  | 9695                            | 9117  | 95,1 | 89,4 | 372          | 332  | 7600                      | 8000  | 13,5              | 12,4         | 4,72  | 4,92 |
| 602349      | MVSI 10/11200-S02   | 97   | □ 135°C                    | 9983                      | 6896  | 11160                           | 11100 | 109  | 109  | 398          | 358  | 7600                      | 8000  | 13,5              | 12,4         | 4,72  | 4,92 |
| 602134      | MVSI 10/12000-S90 Δ | 100  | □ 135°C                    | 10996                     | 7543  | 12294                           | 12141 | 119  | 119  | 500          | 445  | 9000                      | 9500  | 16,3              | 15,0         | 5,21  | 5,73 |
| 602227      | MVSI 10/13000-S02   | 97   | □ 135°C                    | 11510                     | 8158  | 12867                           | 13130 | 126  | 129  | 445          | 395  | 9600                      | 10000 | 17,0              | 16,0         | 4,98  | 5,00 |
| 602142      | MVSI 10/15000-S02   | 105  | □ -                        | 12662                     | 8700  | 14155                           | 14004 | 139  | 137  | 643          | 605  | 10600                     | 11270 | 19,0              | 18,0         | 5,88  | 5,78 |
| 602143      | MVSI 10/17500-S02   | 105  | □ -                        | 15500                     | 10439 | 17327                           | 16804 | 170  | 165  | 691          | 642  | 13000                     | 13700 | 24,5              | 23,0         | 5,71  | 5,96 |
| 602244      | MVSI 10/19500-S02   | 105  | □ -                        | 17947                     | 11430 | 20062                           | 18400 | 197  | 181  | 717          | 650  | 13000                     | 13700 | 24,5              | 23,0         | 5,71  | 5,96 |
| 602144      | MVSI 10/22000-S90   | 110  | □ -                        | 20025                     | 12533 | 22386                           | 20208 | 220  | 198  | 926          | 896  | 19000                     | 19000 | 33,0              | 25,5         | 4,67  | 5,88 |
| 602273      | MVSI 10/25000-S90   | 110  | □ -                        | 22364                     | 14785 | 25000                           | 23800 | 245  | 233  | 960          | 928  | 19000                     | 19000 | 33,0              | 25,5         | 4,67  | 5,88 |
| 602336      | MVSI 10/30000-S02   | 120  | -                          | 27285                     | 18760 | 30560                           | 30200 | 300  | 296  | 1200         | 1050 | 24000                     | 25800 | 40,0              | 38,0         | 4,89  | 5,39 |

\* Working moment = 2 x static moment.

Δ For special application.

□ CSA certification on request, with feeding line included.



DIMENSIONAL SPECIFICATIONS (mm)

| Type              | Fig. | A                        | B   | C   | D   | E   | ØG   | N° | F   | H     | I                        | L   | M   | N   | Cable entry thread |
|-------------------|------|--------------------------|-----|-----|-----|-----|------|----|-----|-------|--------------------------|-----|-----|-----|--------------------|
| MVSI 10/40-S02    | A    | 255                      | 171 | 152 | 90  | 125 | 13   | 4  | 28  | 73,0  | 54,0                     | 127 | 128 | 141 | M20X1,5            |
| MVSI 10/100-S02   | A    | 301                      | 171 | 152 | 90  | 125 | 13   | 4  | 28  | 73,0  | 77,0                     | 127 | 128 | 141 | M20X1,5            |
| MVSI 10/200-S02   | A    | 344                      | 203 | 167 | 105 | 140 | 13   | 4  | 30  | 82,5  | 93,0                     | 145 | 146 | 160 | M25X1,5            |
| MVSI 10/310-S02   | A    | 394                      | 211 | 205 | 120 | 170 | 17   | 4  | 45  | 93,5  | 106                      | 170 | 174 | 182 | M25X1,5            |
| MVSI 10/400-S02   | A    | 394                      | 211 | 205 | 120 | 170 | 17   | 4  | 45  | 93,5  | 106                      | 170 | 174 | 182 | M25X1,5            |
| MVSI 10/550-S02   | A    | 435                      | 224 | 205 | 120 | 170 | 17   | 4  | 42  | 104,5 | 117,5                    | 187 | 162 | 203 | M25X1,5            |
| MVSI 10/650-S02   | A    | 480(50Hz)<br>435(60Hz)   | 224 | 205 | 120 | 170 | 17   | 4  | 42  | 104,5 | 140(50Hz)<br>117,5(60Hz) | 187 | 162 | 203 | M25X1,5            |
| MVSI 10/810-S08   | A    | 500(50Hz)<br>574(60Hz)   | 244 | 230 | 140 | 190 | 17   | 4  | 45  | 116   | 134(50Hz)<br>108(60Hz)   | 207 | 190 | 225 | M25X1,5            |
| MVSI 10/1110-S08  | A    | 574                      | 244 | 230 | 140 | 190 | 17   | 4  | 45  | 116   | 171                      | 207 | 190 | 225 | M25X1,5            |
| MVSI 10/1400-S08  | A    | 620(50Hz)<br>574(60Hz)   | 244 | 230 | 140 | 190 | 17   | 4  | 45  | 116   | 194(50Hz)<br>171(60Hz)   | 207 | 190 | 225 | M25X1,5            |
| MVSI 10/1610-S08  | A    | 617(50Hz)<br>537(60Hz)   | 272 | 275 | 155 | 225 | 22   | 4  | 70  | 130   | 177(50Hz)<br>137(60Hz)   | 238 | 210 | 253 | M25X1,5            |
| MVSI 10/2100-S08  | A    | 663(50Hz)<br>617(60Hz)   | 272 | 275 | 155 | 225 | 22   | 4  | 70  | 130   | 200(50Hz)<br>177(60Hz)   | 238 | 210 | 253 | M25X1,5            |
| MVSI 10/2610-S02  | A    | 666                      | 321 | 310 | 155 | 255 | 23,5 | 4  | 77  | 157   | 178                      | 277 | 215 | 295 | M25X1,5            |
| MVSI 10/3000-S02  | A    | 712                      | 321 | 310 | 155 | 255 | 23,5 | 4  | 77  | 157   | 201                      | 277 | 215 | 295 | M25X1,5            |
| MVSI 10/3810-S02  | A    | 734                      | 347 | 340 | 180 | 280 | 26   | 4  | 80  | 165   | 202                      | 303 | 240 | 320 | M32X1,5            |
| MVSI 10/4700-S02  | A    | 796                      | 347 | 340 | 180 | 280 | 26   | 4  | 80  | 165   | 233                      | 303 | 240 | 320 | M32X1,5            |
| MVSI 10/5150-S02  | A    | 826                      | 347 | 340 | 180 | 280 | 26   | 4  | 80  | 165   | 248                      | 303 | 240 | 320 | M32X1,5            |
| MVSI 10/5200-S02  | A    | 744                      | 370 | 390 | 200 | 320 | 28   | 4  | 90  | 180   | 192                      | 330 | 270 | 350 | M32X1,5            |
| MVSI 10/5700-S02  | A    | 840                      | 370 | 390 | 200 | 320 | 28   | 4  | 90  | 180   | 240                      | 330 | 270 | 350 | M32X1,5            |
| MVSI 10/6500-S02  | A    | 840                      | 370 | 390 | 200 | 320 | 28   | 4  | 90  | 180   | 240                      | 330 | 270 | 350 | M32X1,5            |
| MVSI 10/6600-S02  | C    | 750                      | 437 | 460 | 125 | 380 | 39   | 6  | 35  | 215   | 174                      | 387 | 320 | 414 | M32X1,5            |
| MVSI 10/7000-S02  | A    | 840                      | 370 | 390 | 200 | 320 | 28   | 4  | 90  | 180   | 240                      | 330 | 270 | 350 | M32X1,5            |
| MVSI 10/8000-S90  | A    | 870                      | 395 | 392 | 200 | 320 | 28   | 4  | 100 | 192   | 255                      | 355 | 270 | 375 | M32X1,5            |
| MVSI 10/9000-S90  | A    | 870                      | 395 | 392 | 200 | 320 | 28   | 4  | 100 | 192   | 255                      | 355 | 270 | 375 | M32X1,5            |
| MVSI 10/10000-S02 | C    | 862                      | 437 | 460 | 125 | 380 | 39   | 6  | 35  | 215   | 230                      | 387 | 320 | 414 | M32X1,5            |
| MVSI 10/11200-S02 | C    | 912                      | 437 | 460 | 125 | 380 | 39   | 6  | 35  | 215   | 255                      | 387 | 320 | 414 | M32X1,5            |
| MVSI 10/12000-S90 | C    | 990                      | 454 | 530 | 140 | 440 | 45   | 6  | 38  | 230   | 240                      | 423 | 370 | 448 | M32X1,5            |
| MVSI 10/13000-S02 | C    | 1002                     | 437 | 460 | 125 | 380 | 39   | 6  | 35  | 215   | 300                      | 387 | 320 | 414 | M32X1,5            |
| MVSI 10/15000-S02 | F    | 960                      | 526 | 570 | 140 | 480 | 45   | 8  | 41  | 268   | 200                      | 486 | 510 | 516 | M32X1,5            |
| MVSI 10/17500-S02 | F    | 1040                     | 526 | 570 | 140 | 480 | 45   | 8  | 41  | 268   | 240                      | 486 | 510 | 516 | M32X1,5            |
| MVSI 10/19500-S02 | F    | 1120(50Hz)<br>1040(60Hz) | 526 | 570 | 140 | 480 | 45   | 8  | 41  | 268   | 280(50Hz)<br>240(60Hz)   | 486 | 510 | 516 | M32X1,5            |
| MVSI 10/22000-S90 | F    | 1150                     | 607 | 610 | 140 | 520 | 45   | 8  | 38  | 297   | 298                      | 542 | 510 | 582 | M32X1,5            |
| MVSI 10/25000-S90 | F    | 1150                     | 607 | 610 | 140 | 520 | 45   | 8  | 38  | 297   | 298                      | 542 | 510 | 582 | M32X1,5            |
| MVSI 10/30000-S02 | Q    | 1205                     | 648 | 700 | 140 | 600 | 45   | 8  | 45  | 320   | 310                      | 600 | 510 | 660 | M32X1,5            |

Ia/I<sub>n</sub> = ratio between start-up current and maximum current.

Several sizes are available with different mounting bolt patterns. Please contact sales office at Italvibras.

