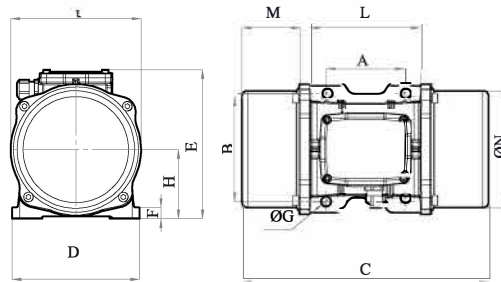




MVE 700/15E-50A0 (EE40070050A0JA0000)

3 PH - 4 poles - 1500 RPM - 220-240/380-415 V - 50 Hz


| Working moment (Kg*cm) | Unbalance (Kg*cm) | Centrifugal force (Kg) | Nominal voltage (V) | Input power (kW) | Current (A) | Power factor | Ia/In |
|------------------------|-------------------|------------------------|---------------------|------------------|---------------|--------------|-------|
| 56,83 | 28,42 | 714 | 220-240/380-415 | 0,62 | Δ 2,28 Y 1,32 | 0,68 | 3,2 |








*Technical drawings are illustrative purposes only, please refer to 2D/3D drawings available on "FINDER" app. Contact us for more information.

| OVERALL DIMENSIONS (mm) | | | | | | | | | | | | | |
|-------------------------|-----|-----|----|--------------|-----|-----|-----|----|----|-----|-----|----|-----|
| Weight (Kg) | A | B | G | Holes number | C | D | E | F | H | I | L | M | N |
| 27 | 120 | 170 | 17 | 4 | 391 | 208 | 210 | 22 | 96 | 185 | 192 | 97 | 170 |

| TECHNICAL FEATURES | | | | | | |
|--------------------|------------------|-------|------------|----------------------|-------------|-------------|
| Type of grease | Greased for life | Screw | Washer | Clamping torque (Nm) | Cable type | Cable gland |
| / | Yes | M16 | 17 x 30 mm | 185 | 4G2.5 120°C | M20 120°C |

| BEARINGS LIFE HOURS | | | | |
|---------------------|---|----------|---------|---------|
| Bearing model | Type | 100% C.F | 80% C.F | 50% C.F |
| 6306 2Z |  | 3053 | 5964 | 24428 |

| CERTIFICATION | |
|--|---|
| ATEX II2 D Ex tb IIIC Tx Db IP66 IECEx Ex tb IIIC Tx Db IP66 CLASS II DIV.2 GROUP F,G T4 Ex tb IIIC Tx Db IP66 [Tx Size Micro,10-30:100°C - Tx Size 40-91:135°C] CONFTO UL1004-3, UL1004-1,UL 60079-0,UL60079-31 CERT. CSA C22.2 No.100,CSA C22.2 No.77, CSA C22.2N.60079-0,CSA C22.2N.60079-31 T.Amb -20/+40°C |      |

REV.1-22/05/2019

Dimension with coarse degree of accuracy related to UNI 22768/1 Rights reserved to modify technical specifications.

